

THURSDAY MAILING



National Capital
P R E S B Y T E R Y
MISSIONAL · PASTORAL · PROPHEIC

April 28, 2022



In this edition

Announcements

From the desk of:

John Molina-Moore, General Presbyterian

Tara Spuhler-McCabe, TDir. Congregational Development & Mission

The Reformed Political Tradition and the Current Crisis of Democratic Politics

A short course offered by the Reformed Institute

May 7, 14, 21 – Virtual (Zoom)

Celebration of Diversity in Worship Concert

May 1 – Trinity Presbyterian Church, Arlington

Is America Possible? A Test for Democracy & Faith

Sponsored by the McClendon Scholar Program

May 11 – New York Avenue Presbyterian Church (In person & Virtual (Zoom))

Virtual Spring Gathering and Annual Business Meeting

“Caring for God’s Creation”

NCP Presbyterian Women

May 14 – Virtual (Zoom)

Beyond Pink & Blue

Trans + Family Spiritual Care

A Free Hybrid Community Event (registration required)

May 14 – Bethesda Presbyterian Church

A Pilgrimage of Discovery – Israel & Palestine

with Rev. Susan Wilder and Dr. Ben Trawick

October 7-17, 2022 – Registration now open

Presbyterian Church of Cameron and Jeff & Christi Boyd

May 22 – Southminster Presbyterian Church (Zoom)

TWO OPPORTUNITIES FROM DCYAVS

PENTECOST OFFERING & An Evening of Music, Community and Celebration

June 2022

Worship REBOOT

sponsored by NCP Worship and Theology Team

on-line registration now open

June 16-17 – Bon Secours Retreat & Conference Center

Announcements:

DIVERSITY IN WORSHIP CONCERT When: May 1, 2022, 4 p.m. This concert is loosely based on the liturgy of the African Methodist Episcopal (AME) Church. It will be a joyous interactive celebration of African American gospel music. People from a variety of faiths and worship styles will attend. Come ready to sing and celebrate. All, including children, are Welcome! (*hats optional*) Who: featuring Mosaic Harmony community choir and Trinity musicians Where: Trinity Presbyterian Church Calvin Hall 5533 N. 16th Street Arlington, VA 22205



Our trans friends and family members deserve respect, support, and care – especially now when trans children and students are under political attack. **Please join us for Beyond Pink & Blue: Trans+family and Spiritual Care**, Saturday, May 14 from 9:30am to 4:00pm ET. This free hybrid community event in person and online is offered by Bethesda Presbyterian Church, Bethesda, Maryland. For more info and to register: beyondpinkandblueregistrar@gmail.com

Register Now, for May 15 Deadline: A Pilgrimage of Discovery: Israel & Palestine: Travel to Israel and Palestine on a pilgrimage and study tour October 7-17, 2022. Join others from National Capital Presbytery for this trip, led by Rev. Dr. Ben Trawick, pastor at Grace, Springfield, and Rev. Susan Wilder, co-chair, Israel Palestine Mission Network, PCUSA. Travelers will walk in the land of the Bible beside those who live in the land today. Visiting places of Jesus' life and ministry and having conversations with Israelis and Palestinians, the group will consider what it means to be faithful witnesses to Christ in this time. \$3,850, double occupancy, includes round-trip airfare from Dulles, lodging, and meals. *See brochure included in this Thursday Mail*; for more information, contact Susan at wildersus@gmail.com or Ben at ben@gracepresby.org.

REGISTER NOW: "Worship REBoot", Thursday - Friday, June 16-17, 2022, at Bon Secours Retreat Center in Marriottsville, MD, cost \$200.00 (This includes lodging, dinner on Thursday, and breakfast and lunch on Friday.) Sponsored by the Worship and Theology Team of NCP. More information and registration link included in this TM



Join Providence on a Holy Land Pilgrimage, October 25 - November 4, 2022

Text: Providence Church invites you to join us in October as we journey in the "Footsteps of Jesus" on a Holy Land Pilgrimage. We will experience the scriptures in Jerusalem, Bethlehem, and the Galilee, with an optional extension to Petra.

The full itinerary is available here:

<https://progressivepilgrimage.com/provpres22/> . Please contact Eric Doss of Progressive Pilgrimage at 410-300-1170 or eric@progressivepilgrimage.com with any questions.



Serve on summer staff at Massanetta Springs: Massanetta Springs is hiring day camp counselors, lifeguards, and facilities and hospitality staff to serve its summer programs! Join us for this fun, meaningful work for a few weeks or the full ten-week season from June-August. Full time paid positions include housing and meals and may be able to fulfill college or internship credits. Contact mdaycamp@massanettasprings.org or visit MassanettaSprings.org/nettadaycamp to learn more!



April 28, 2022

Partners in ministry,

The May 24, 2022, presbytery meeting will be in-person in Stone Hall at National Presbyterian Church with a virtual participation option. Detailed information, including how to register will come soon. This is a snapshot of what the evening will look like.

The doors will open at 4:30 p.m. with worship and business starting at 5:00 p.m. We encourage you to use that time before the meeting starts to catch up and check in with all of the wonderful people around our presbytery that you might not have seen face to face in the past 2 years, or in some cases ever.

For those that choose the virtual option (Zoom) we will “open” the meeting at 5:00 p.m. You will still have opportunities to offer voice and vote throughout the meeting.

An action item for this upcoming meeting will be approving the policy for CRE’s (Commissioned Ruling Elders). This is an exciting opportunity for some of our churches who have struggled to secure pastoral leadership. It’s a brand-new initiative so we want to share it with you before the meeting so that you have time to ask thoughtful questions before voting on the floor. That opportunity will happen the evening before the meeting, via zoom and we’re calling it **“Action Item Dialogue”**. (Link for participation will be sent with the presbytery packet notice.) We’ve used a format like this in the past for discussion on upcoming action items for the presbytery specifically the budget and use of presbytery funds. We will keep this opportunity for each meeting going forward.



We are moving away from the “open space” format we used from past presbytery meetings. In order to respond and expand the spirit of what open space offered we will be organizing other opportunities for the body to gather that won’t be tied to the presbytery meeting. This space and time will be for groups that are promoting initiatives that promote, **GROWTH, through REACH AND IMPACT**. This provides a space for leaders in our congregations to directly engage with new ideas and initiatives that can help strengthen their ministries.

I look forward to being with you in-person!

John

April 28, 2022

Greetings People,



Currently, myself and Rev. Juli Wilson-Black are deep into a training with [Dialogue for Peaceful Change \(DPC\)](#). There are parts of my heart and brain that are being dismantled and freshly taught more expansive and inclusive practices of conflict and change! Did you know there are five different types or styles of Conflict? And one of them is not simply “to fight”. There is space for conflict! There is a need for change! Growth out of peaceful dialogue that can only occur through or with conflict...see, I told you my brain is remapping some deep stuff!!!!

This moment is a privilege to be in this training. This training continues the work for each of us in our respective congregations and communities of ministry. We hope to provide aspects of this particular training for our congregations in the near future. Another tool that we are offering again is [Holmes Coaching Training](#).

SAVE THE DATES: pay attention to the schedule as it is a six-week course. But there are ample spaces to work with your important schedules. The dates and times for Holmes Coaching Training are [September 20 – October 27](#). The sessions are broken into two classes each week, Tuesday, and Thursday from 9am -12pm. More information and testimonies will be shared via future Thursday Mails and FB. This particular training has inspired leaders throughout our presbytery in areas of volunteer ministry, small group and congregational discernment, leadership development for congregational leaders, and personal entrepreneur opportunities. Cost can be subsidized from the presbytery. Strongly consider this and reach out to me or Rev. John Lee for any initial questions. Again, keep looking for more information.

Peace and Courage,

Rev. Tara Spuhler McCabe





The Reformed Political Tradition and the Current Crisis of Democratic Politics: A Short Course Offered by the Reformed Institute

Four sessions, Saturday mornings (9:30-noon): April 30, May 7, 14, 21. Complete Virtual Event from. No charge, but a donation is welcome.

Instructor: Dr. R. Bruce Douglass, former director of the Reformed Institute of Metropolitan Washington and emeritus member of the political theory faculty of the Department of Government, Georgetown University.

The course is designed to examine critically the relevance of certain key ideas in the Reformed Protestant political tradition (from Calvin to Wolterstorff) to the current crisis of democratic politics, with primary emphasis on developments in the industrialized nations.

The four sessions will cover the following topics:

April 30 – Reformed Political Thought—the Foundations

May 7 – Reformed Political Thought—Subsequent Developments

May 14 – Three Versions of Democracy—Constitutional, Liberal and Populist

May 21 – Democracy, Religious Pluralism and the Idea of a Christian Nation

Participants will be encouraged (but not required) to do a modest set of readings, most of which will be available online.

REGISTER FOR THE COURSE HERE: <https://reformedinstitute.org/event/short-course-on-reformed-thought-and-the-crisis-of-democracy-virtual/>

All are invited to a

Celebration of Diversity in Worship Concert

**Sunday, May 1st
4-5:30pm**

Trinity Presbyterian Church Arlington, VA

This concert, featuring the Mosaic Harmony Community Choir and Trinity musicians, will be loosely based on the liturgy of the African Methodist Episcopal (AME) Church. This joyous, interactive event that honors the blessed gift of African American gospel music will include attendees from a variety of faiths and worship styles.

Come and be uplifted.

Be prepared to sing and celebrate.

All, including children, are welcome!

Church hats are encouraged.

Calvin Hall

Trinity Presbyterian Church
5533 N. 16th Street Arlington, VA

Please note: masks will be required while singing.

Is America Possible? A Test for Democracy and Faith

With Rev. Jim Wallis



Wednesday, May 11, 7:00 pm

Sponsored by the McClendon Scholar Program of The New York Avenue Presbyterian Church

The program will be held in the sanctuary at New York Avenue Presbyterian Church in Washington, DC, and also be available online via zoom

Register to attend either in-person or online:

www.jimwallismay11.eventbrite.com



For more information, contact 240 393-7246 or dialogdays@aol.com

Virtual Spring Gathering and Annual Business Meeting

Saturday, May 14, 2022
10:00am

Please join us on Zoom for
friendship and fellowship
starting at 9:45am

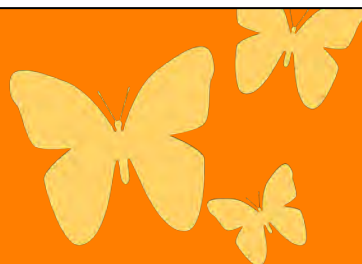


National Capital
Presbytery

Presbyterian
Women

For more information, check out the [NCP PW Facebook page](#).

Offerings will be
collected to support
the work of the
[Presbyterian
Disaster Assistance
Fund](#).



Caring for God's Creation!

With signs of spring everywhere, let
us gather to discuss the ways we can
individually and collectively be better
stewards of God's earth and all its
creation.

Please register [here](#) by May 12th, 2022

BEYOND PINK & BLUE

Trans+Family Spiritual Care

Saturday
May 14th
9:30-4:00 ET

A FREE HYBRID COMMUNITY EVENT
IN PERSON AND ONLINE

Bethesda Presbyterian Church Bethesda, Maryland
Registration at: beyondpinkblueregistrar@gmail.com

Grace Presbyterian Church

Growing in Spirit—Living as Disciples—Serving God's World

A Pilgrimage of Discovery Israel & Palestine



Rev. Susan P. Wilder

has served several churches in Northern Virginia, including most recently as interim pastor at Kirkwood Presbyterian Church in Springfield, VA. Susan has lived in Jerusalem, led trips to the region, and previously served as consultant to the Faith Forum on Middle East Policy, a network of Christian denominations and organizations working for a just peace in the Middle East. She served as representative for Middle East Policy for the Evangelical Lutheran Church in American (ELCA) from 2008 to 2012. She is currently the co-moderator of the Israel/Palestine Mission Network of the PC(USA).



Rev. Dr. Ben Trawick

has served Grace Presbyterian Church, Springfield, VA, as Head of Staff since February 2017. He previously served as Head of Staff at North Wilkesboro (NC) Presbyterian Church (2003-2017), and as Pastor of Christ Presbyterian Church, High Point (NC) (1999-2003), and of New Dublin Presbyterian Church, Dublin, VA (1993-1999). Prior to entering seminary, he served four years as a U.S. Naval Officer.

About this trip: On this exciting pilgrimage and study tour, participants will walk through the land of the Bible beside those who live in the land today. Visiting sites of Jesus' life and ministry, travelers will consider together what it means to be faithful witnesses to Christ in this time. Conversations with Israelis and Palestinian will offer a window on their hopes and dreams for a peace-filled future and insights into how we can support them in that vision.

October 07 - 17, 2022

Package Price: \$3850 From Washington, DC (IAD)

Other Departure Cities Available!



Package Price Includes:

- Round trip airline ticket
- Double occupancy accommodations
- Breakfast, lunch and dinner daily
- Air conditioned private bus
- English speaking Christian tour guide
- Much More!

Follow us on



Grace Presbyterian Church

7434 Bath St. Springfield, VA

Phone: (703) 451-2900

Good Shepherd Travel

www.goodshepherdtravel.com

Toll Free: 1-844-659-5263



A Pilgrimage of Discovery Itinerary Highlights

October 07 - 17, 2022

Friday, October 7th, 2022.

Departure

- Depart USA
- OS 94 Dulles - Vienna 5:35pm - 8:40am next day

Saturday, October 8th, 2022.

Tel Aviv, Nablus

- OS 857 Vienna - Tel Aviv 10:25am - 2:50pm
- Arrive in Tel Aviv, meet your guide and driver, transfer to Nablus
- Overnight with local families in Nablus

Sunday, October 9th, 2022.

Nablus

- Worship at Church of the Good Shepherd, meet with partner church
- Lunch at Tanureen
- Visit the Samaritan community
- St. Philip Episcopal Church. Visit St. Luke's Hospital
- Dinner and overnight with local families in Nablus

Monday, October 10th, 2022.

Nablus, Ibillin, Nazareth

- Visit Jacob's Well
- Visit Mar Elias High School in Ibillin
- Visit Nazareth, Cana of Galilee
- Dinner and overnight in Tiberius

Tuesday, October 11th, 2022.

Sea of Galilee

- Tabgha & Church of the Beatitudes
- Visit the Nof Ginosar Kibbutz to see "Jesus Boat." Boat ride on Sea of Galilee
- Capernaum Synagogue and Peter's house
- Dinner and overnight in Tiberius

Wednesday, October 12th, 2022.

Jericho, Dead Sea

- Depart Galilee via Jordan Valley
- Qumran, Dead Sea
- Visit Jericho, Zacchaeus tree, old city, and view mount of Temptation
- Evening meeting with Doug Dicks (Presbyterian Representative)
- Dinner and overnight in Bethlehem

Thursday, October 13th, 2022.

Bethlehem

- Visit Manger Square and the Church of the Nativity
- Visit Dar Al Kalima
- Visit Tent of Nations
- Dinner and overnight in Bethlehem

Friday, October 14th, 2022.

Mount of Olives, Old City Jerusalem

- Mt. of Olives, Garden of Gethsemane, Church of Dominus Flevit, Church of All Nations
- Mount Zion
- Tour Jerusalem with an Israeli Guide
- Dinner and overnight in Bethlehem

Saturday, October 15th, 2022.

Hebron

- Visit to Hebron, Old city, Cave of Machpelah, Tombs of Patriarchs
- Visit CPT (Christian Peacemaker Team)
- Visit Ephrata Settlement
- Visit to a refugee camp
- Overnight in Bethlehem

Sunday, October 16th, 2022.

Jerusalem

- Western Wall, Haram al Sharif/Temple Mount
- Church of St. Anne, Walk the Via Dolorosa ending at the Church of the Holy Sepulcher
- Free time in the Old City of Jerusalem
- Farewell dinner at oriental restaurant
- Dinner and overnight in Bethlehem

Monday, October 17th, 2022.

Departure

- Departure
- LH 695 Tel Aviv - Frankfurt 8:00am - 11:30am
- LH 418 Frankfurt - Dulles 1:10pm - 4:00pm

Note: *While we do our very best at making sure all items listed in your itinerary are included, there are times when conditions beyond our control affect your program/itinerary, including but not limited to air carrier changes, delays, weather, political climate, time constraints, or changes by your tour leader and tour guide.

DEPOSITS AND PAYMENTS: A deposit of \$500.00 per person is required to make a reservation. An additional payment of \$750.00 per person is due by April 07, 2022. The final payment is due no less than 90 days prior to the departure date of the tour (July 07, 2022). Payment can be made by personal check or money order. Credit card payments will be accepted but will incur a 4% surcharge at the time of booking. Reservations received after July 07, 2022 may incur additional charges due to supplier contract terms.

CANCELLATIONS AND REFUNDS: If a passenger cancels his/her tour membership there will be a cancellation fee of \$100.00 per person to cover administrative and communication costs up until 121 days before departure. For cancellations 120-91 days before departure the cancellation fee will be \$250.00 per person. 90-61 days before departure the cancellation fee will be 50% of the cost per person. There will be no refund for cancellations within 60 days of departure, no-shows, or partially completed tours. All cancellation requests must be addressed to Goodshepherd Travel in writing. Trip cancellation insurance is recommended.

FARE INCLUSIVE. Roundtrip air transportation from Washington, DC (IAD) International Airport as indicated on the registration form. Nine (9) nights hotel accommodations, based on two people sharing a double or twin-bedded room in four-star hotels by (local standards). All meals as outlined in the brochure consisting of full Local breakfasts (B) Lunches (L) and dinners at the hotel (D). Sightseeing as outlined in the itinerary by private motor coaches, utilizing the services of a Government licensed, local English-speaking tour guide. Entrance fees for attractions if applicable. All transfers between airports and hotels by private motor coach. Service charges and taxes normally levied by hotels and restaurants. All U.S. & Israeli departure taxes are included in the price of the tour. The brochure price is per person in US dollars.

TOUR ITINERARY SUBJECT TO CHANGE: Goodshepherd Travel constantly strives to adhere to the specifics shown in the itinerary; however, circumstances may necessitate changes. Such circumstances may require changes without advance notice during the tour. Goodshepherd Travel reserves the right to change the itinerary if unforeseen circumstances beyond our control force a change. Goodshepherd Travel is not responsible for any changes caused by unforeseen circumstances.

TOUR CANCELLATION: Goodshepherd Travel reserves the right to cancel or withdraw the tour at any time. In the event of a cancellation deemed necessary by Goodshepherd Travel, the sole and exclusive responsibility of Goodshepherd Travel is to refund all monies recovered.

NOT INCLUDED: Passport costs, visa fees (if any), and health documentation costs (when required); food and beverages (including coffee and tea) not usually included with the table d'hote meals; optional sightseeing tours and excursions; accident and baggage insurance; transporting and handling excess luggage; tips to persons rendering special personal services; items of a purely personal nature such as laundry, telephone, and cable expenses, room service orders, etc.; transportation between the home city and the international departure city. Tips to guides, motor coach drivers, hotel porters, and restaurant staff (i.e., maître d', table waiter, etc.)

AIR ROUTINGS: The brochure price includes IATA jet economy class transportation from the international departure city applicable on all IATA and ARC carriers, based on the 6/45 day Apex fare to the Middle East. Goodshepherd Travel reserves the right to choose the air carrier, routing, and departure time for each passenger. Airfares used are based on contracted group fares and are highly restrictive. Payments for and restrictions on airline tickets are governed by the applicable fare. Cancellation fees levied by the airlines are applicable if you cancel or change your air ticket for any reason after purchase of air ticket. Ticketing must be completed 45 days prior to departure. Group fares do not permit deviations; passengers who wish to deviate may arrange their own airfare. An airline credit of \$1050.00 will be given to those passengers who arrange their own airfare. Passengers planning to arrange their own air transportation must notify Goodshepherd Travel in writing on or before July 07, 2022. Seat numbers will be assigned by the airline at check-in; specific seat requests cannot be guaranteed. Passengers are responsible for providing frequent flyer information upon check-in.

HOTELS: Tour prices are per person, based on two people sharing a room in 4-star hotels. Single rooms are subject to availability and at an additional cost of \$800.00 (tour participants without a roommate will have to pay single room surcharge).

BAGGAGE: You may check no more than one (1) piece of luggage whose overall dimensions does not exceed 62 inches (length + width + height) and whose weight does not exceed fifty (50) pounds in total. Checking a second bag will cost up to \$100.00. Each passenger may also bring one (1) piece of carry-on luggage. Tips to hotel porters are included for one normal sized piece of luggage, excluding carry-on bags which must remain in your possession at all times. These regulations may change without notice so please read the monthly correspondence you will receive from Goodshepherd Travel for the most current information. Garment bags cannot be carried. Under no circumstances may dangerous articles such as firearms, explosives, oxygen, or combustible substances be contained in any baggage. Medications, valuables, passports, and a change of clothing should be packed in your carry-on bag.

DISABILITIES: Due to the difficult terrain at sites we visit, persons requiring oxygen or oxygen therapy will not be permitted on the tour. For reasons of passenger safety and well-being, persons with impaired mobility, vision, or mental capacity will not be permitted on the tour. Goodshepherd Travel reserves the right to refuse passage to someone who is in such physical or mental condition as to be unfit for travel or who may require care and attention beyond that which the tour guide and tour host can provide. The tour requires a substantial amount of walking, and the sites are not accessible by wheelchair.

INSURANCE: Acting only as agents for suppliers, Goodshepherd Travel is not responsible for damage, loss, or theft of luggage and/or personal belongings, or for personal injury, accident, illness and/or death as a result of any occurrences or conditions beyond its control, including, but not limited to, defects in vehicles, breakdown in equipment, strikes, terrorist attacks, hostage situations, kidnappings, hijackings, protests, riots, public demonstrations, or theft. For your protection, it is important that you have adequate insurance to cover these possibilities. Additional information and application forms for all types of coverage will be supplied you prior to departure.

PASSPORT: A passport valid six months beyond the return date is required and must be obtained in person by each tour member. Complete instructions and application forms for passports can be obtained by contacting your local courthouse or post office. A visa is not required for U.S. citizens to enter Israel/Palestine

PRICE CHANGES: Tour conditions and air fares are subject to Governmental, IATA, ARC, and airline regulation requirements in effect at the date of and during the tour. All rates are quoted in US dollars and are based on tariffs and costs in effect in November 2021 and are subject to change without notice. Taxes and fuel surcharges of \$423.00 are included in your tour cost and are subject to change without notice. Goodshepherd Travel reserves the right to pass along additional fuel surcharges or additional taxes imposed by the airline.

DISCLAIMER: Goodshepherd Travel acts as a tour operator and only a tour operator. The suppliers providing transportation, sightseeing arrangements and hotel accommodations for the tour program are independent contractors and are not agents or employees of Goodshepherd Travel. All coupons, receipts and tickets are issued subject to the terms and conditions specified by the suppliers. By utilizing the services of the suppliers, you agree that Goodshepherd Travel shall not be liable for any accident, loss, injury, death, or damage of any kind to you or to those traveling with you. This includes, but is not limited to, conditions beyond its control, defects in vehicles, breakdown in equipment, strikes, terrorist attacks, hostage situations, kidnappings, hijackings, protests, riots, public demonstrations, theft, delay or cancellation of or changes in itinerary or schedules. At the time of printing a TRAVEL WARNING as issued by the United States Department of State was in effect for parts of Israel and the West Bank. Remember also that all travel documents as well as compliance with customs regulations are your responsibility. The terms under which you agree to take these tours cannot be changed or amended except in writing, signed by an authorized officer of Goodshepherd Travel. Airlines concerned are not to be held responsible for any act, omission or event during the time you are not on board the aircraft. The passenger contract in use by the airline, when issued, constitutes the sole agreement between it and you. By virtue of my signature on the registration form below I acknowledge and assume all risks associated with this trip and I agree that Goodshepherd Travel assumes no liability of any kind and I hereby expressly waive any and all possible claims against Goodshepherd Travel and/or Rev. Susan P. Wilder and Rev. Dr. Ben Trawick.

ACCEPTANCE: Registration for trip and payment of deposit constitutes your acceptance of the "these terms."

<div>Trip date: October 07 - 17, 2022</div>		<div>Package Price: \$3850</div> <div>Single supplement: \$800 (Private Room)</div>	
<div>Package price includes the following:</div> <ul style="list-style-type: none">Round Trip Airline TicketMeet & Assist at Ben Gurion Airport upon arrivals and departuresTwo nights in Nablus in double occupancy with breakfast and dinnerTwo nights in Tiberius in double occupancy with breakfast and dinnerFive night in Bethlehem in double occupancy with breakfast and dinnerTen days sightseeing in modern air-conditioned private busEnglish speaking government licensed Christian guideAll entrance fees to places of interestsSpecial dinner at oriental restaurant with folklore showHonorariums for speakersLunchesTips for guide, driver, hotels and restaurants		<div>Package price does not include the following:</div> <ul style="list-style-type: none">Bottled water, soft drinks and other beveragesAll Personal ExpensesTravel InsuranceAll prices reflect a 4% cash discount and is forfeited when using a credit card <div>Notes: Price is based on 20 or more persons in the group. Price is subject to change if airlines or ground operators increase their prices, or if a fuel surcharge is added by the airline.</div> <div>For more information: wildersus@gmail.com or ben@gracepresby.org</div>	

RESERVATION APPLICATION
Grace Presbyterian Church

Tour Leaders:

Rev. Susan P. Wilder and Rev. Dr. Ben Trawick

Pilgrimage to the Holy Land
(October 07 - 17, 2022)

Group Reference Number: **HL100722A**



PERSONAL INFORMATION (Please complete one application per person)

Full Name (as printed on your passport):				
First Name:		Middle Name:		Last Name:
Name (as you wish it to appear on your name badge):			Date of birth:	Male <input type="checkbox"/> Female <input type="checkbox"/>
Mailing Address:	Street:		Mobile phone:	Home phone:
City:	State:	Zip code:	Work phone:	
Email address:				

PASSPORT INFORMATION

Country of citizenship:	Passport number:
Passport date of issue:	Passport date of expiration:
Frequent flyer number:	Known traveler number:

ROOM ASSIGNMENT INFORMATION

Please check one: Double/Triple occupancy <input type="checkbox"/> Single occupancy (Private Room) \$800.00 additional <input type="checkbox"/>
<i>*All prices are in US Dollars based on per person in a double/Triple room, Passengers rooming alone is subject to single supplement*</i>
If choosing double occupancy, please indicate the name of your roommate if known at time of booking: <i>Single rooms may be available on a limited basis; home stays in Nablus will be double occupancy in most cases.</i>
If you would like to be assigned a roommate, check here: <input type="checkbox"/> <i>We will make every effort to accommodate your request, however we cannot guarantee a roommate.</i>

EMERGENCY CONTACT INFORMATION

Please list the name, relationship, and phone number for a family member/close friend who is <u>NOT</u> traveling with you:
--

I agree to the terms and conditions as stated in this tour contract: Signature: _____ Date: _____

Please enclose a copy of current passport and a deposit of **\$500.00 per person** made payable to
All travelers must present proof of Covid vaccination. Mail proof with registration form.

Goodshepherd Travel
9021 Washington Lane
Lantana, Texas 76226

Follow us on



Toll Free: 1-84HolyLand (4-659-5263) FAX: 1(844)659-5263
www.Goodshepherdtravel.com | info@Goodshepherdtravel.com



Changed date!!!

Southminster Presbyterian Church

(Rev. Elenora Giddings Ivory 301-273-9121)

Invites you to a ZOOM presentation by Jeff Boyd on

May 22, 2022, at 2:00 pm EST

Our members will hear about the work of the Presbyterian Church (USA) and the Presbyterian Church of Cameroon from this Mission Worker who is in this Central Region of Africa. He will join us on this ZOOM.

<https://us06web.zoom.us/j/84415805496?pwd=VFZNeFNNcW1tM0JsakpaeGlmQmhZZz09>

Cameroon **Featured Mission Worker**
Jeff and Christi Boyd



Presbyterian World Mission supports work-scholarship programs that simultaneously provide affordable access to secondary education, while putting to use available land at rural schools so long-lasting orchards can be prepared for future sustainability. This helps balance declining Cameroon government subsidies for education, which has left parents with increased school tuition bills that they can't afford. Our church partners deeply value education, and we support their work. We also support the training of pastors as well as lay church leaders who often take the lead on rural new church development. Presbyterian World Mission has worked in Cameroon since 1875.

[Presbyterian Mission Agency Give to Presbyterian Church In Cameroon \(PCC\),](#)
[General Support Fund | E864103 | Presbyterian Mission Agency](#)

TWO EXCITING OPPORTUNITIES FROM DC YAV!

pc(usa) Pentecost Offering

Designate DC YAV as the recipient of your discretionary portion of the offering on June 5. Your support keeps our program alive and running! We thank you for partnering with us!

The PC(USA) Young Adult Volunteer (YAV) program is an ecumenical, faith-based year of service for young people (ages 19–30) in sites across the United States and around the world, including in Washington, DC.

AN EVENING OF MUSIC, COMMUNITY, CELEBRATION
TO BENEFIT DC YAV



7-9PM EDT

VIRTUAL & IN-PERSON WITH WATCH PARTIES ENCOURAGED

BUY YOUR TICKETS HERE!!!

CONTACT DCYAVPROGRAM@GMAIL.COM FOR MORE INFO

WORSHIP REBOOT

JUNE 16-17, 2022

BON SECOURS RETREAT & CONFERENCE CENTER
MARRIOTTSTVILLE, MD

HOSTED BY THE WORSHIP & THEOLOGY TEAM OF NCP

Join the Worship & Theology Team for two days of a **"worship reboot"**! We will hear from Dr. McFee on new ways of integrating worship design, artistic rituals and more. We will also hear from colleagues around our presbytery on Humor, Setting the Scene, Hybrid on a Shoestring, Being Real, Tech Steps and of course, Music! (Schedule included on this flyer)

Cost: \$200 pp, includes overnight lodging, dinner, breakfast, and lunch



OUR KEYNOTE SPEAKER

Educator, Ritual Artist, Adventurer

Marcia McFee, PhD is a professor, worship designer, author, preacher, and ritual artist. Drawing on a first career in professional dance and musical theater and equipped with a Master's in Theology and a PhD in Liturgical Studies and Ethics, she understands the role of any worship artist in the church as that of creating extraordinary portals through which communities' journey with the Spirit. The task is at once deeply theological and wonderfully artistic.

Marcia McFee - Worship Consultant

REGISTER HERE



WORSHIP REBOOT
JUNE 16-17, 2022
BON SECOURS RETREAT & CONFERENCE CENTER
HOSTED BY THE WORSHIP & THEOLOGY TEAM OF NCP

SCHEDULE

Thursday

4:30 pm	Check-in
5:30pm	Dinner
7:00 – 8:30	Keynote #1 – Dr. Marcia McFee
8:30 – 9:00	Evening Worship

Friday

8:00 am	Breakfast
9:00 – 11:00	Keynote #2 – Dr. Marcia McFee
11:15 – Noon	Small Groups
Noon	Lunch
12:45-1:45	Worship Talks (6-7 minutes) Rev. Barbara Heck-“Humor in Worship” Rev. Chuck Booker- “Setting the Scene- The Sacredness of Screen” Todd Richardson- “Music in Hybrid Worship” Elder Willie Montgomery-“Next Steps in Tech” Elder Jesy Littlejohn- “It’s Still Sacred on a Shoestring Budget” Rev. Don Meeks- “Being Real”
2:00 pm	Closing Worship